

INTERNATIONAL CONFERENCE ON
MOUNTAINS AND CLIMATE CHANGE

Linking the understanding and Action

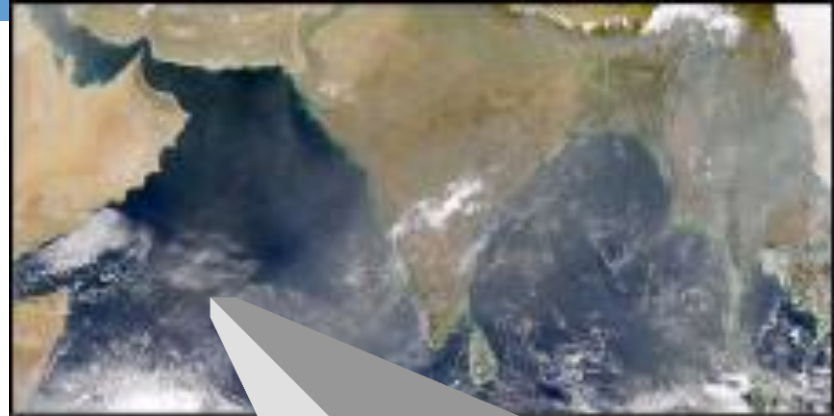
lyngararasan, Mylvakanam
UNEP



High Summit
LECCO 2013

INDOEX

**1998-1999: Recognition by INDOEX
on the need for integrated
approach for air pollution and
climate change**



- Haze at 5km; up to 3km high
- Size of continental US
- Covering Indian Ocean, South Asia, Southeast Asia and China



2002 Preliminary Assessment

2002: Publication of the preliminary assessment

- **Need for science and capacity**



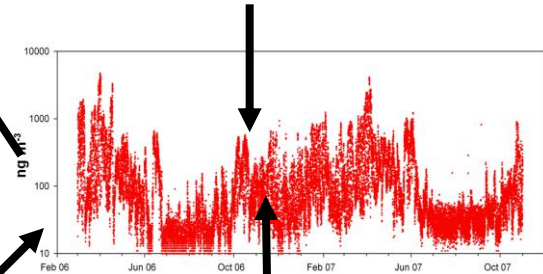
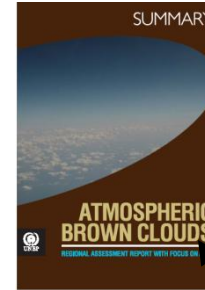
Over 10 Years of Science

ABC Science Team

Science: a better understanding of the science of ABCs with new findings on regional climate change.

Observatory: an integrated network of strategically located state-of-the-art surface climate observatories

Impact assessment: health, crop, water budget, and climate

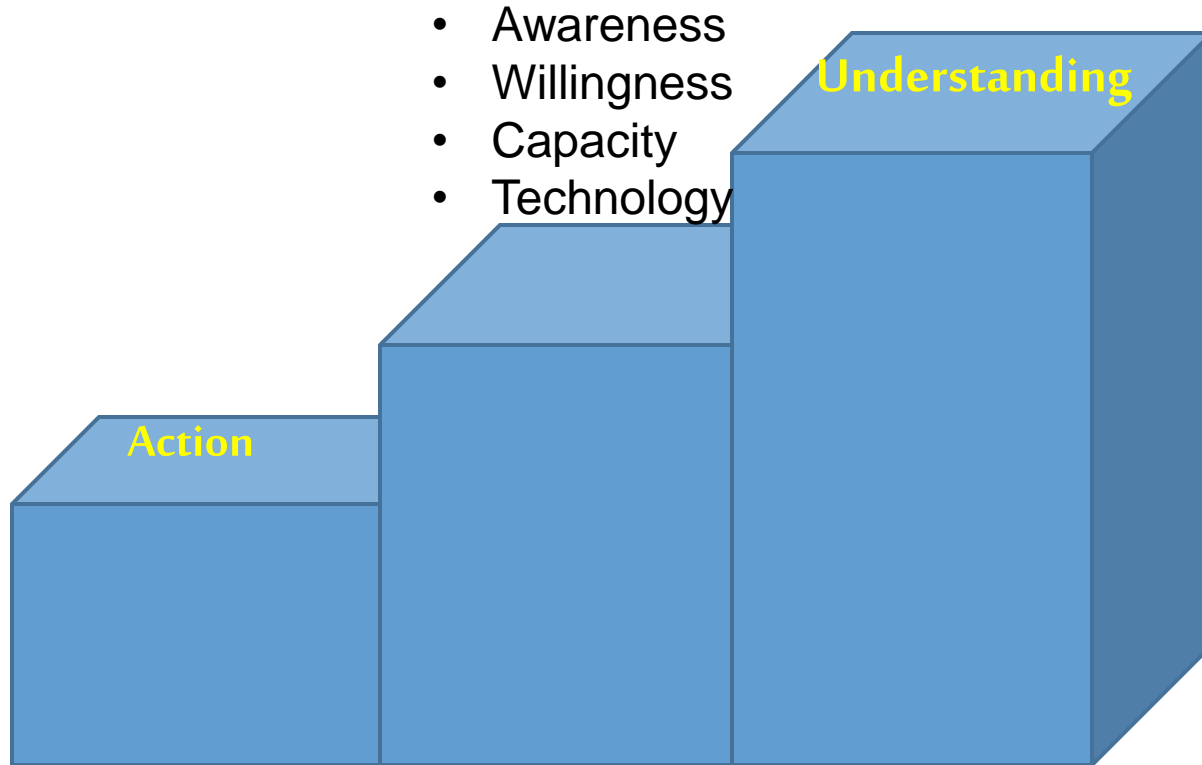


Climate Science

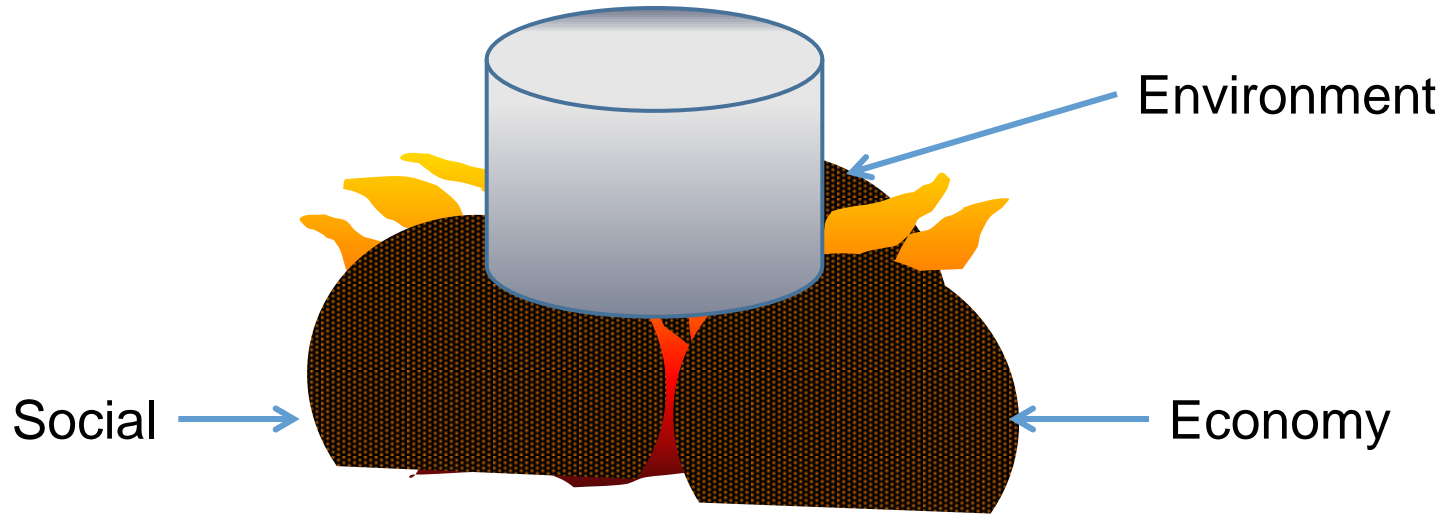
“Human influence on the climate system is clear. This is evident from the increasing greenhouse gas concentrations in the atmosphere, positive radiative forcing, observed warming, and understanding of the climate system.”

Summary for policy makers, IPCC 2013

Link between understanding and action

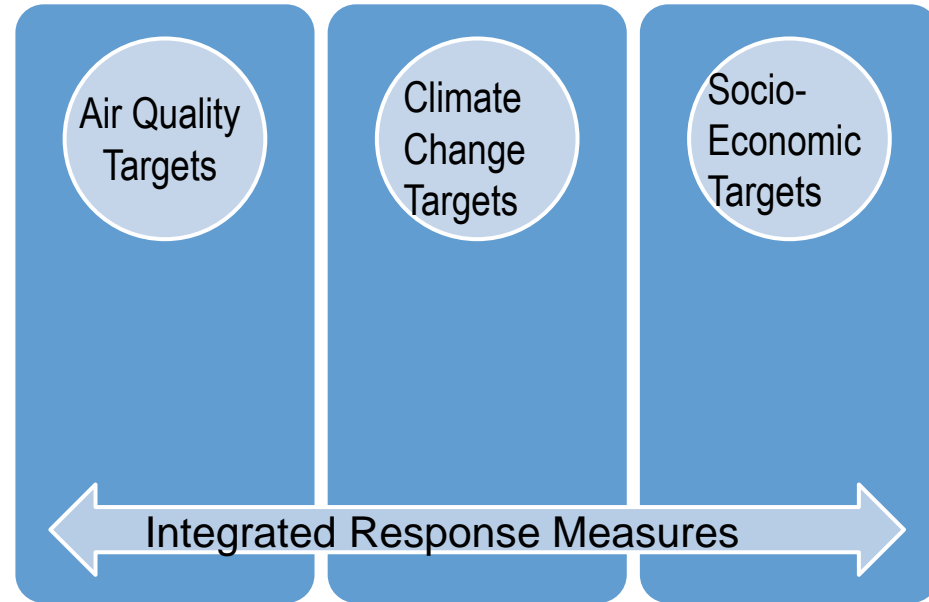


Climate Change in the context of SD



Sectoral Integration

- Integrated response in the context of sustainable development will improve human health, agriculture production, regional climate, water security, living standards, and economy
- Contributes to global efforts to achieve both the Millennium Development Goals and the Rio+20 Declaration



Project Surya

http://www.un.org/en/sustainablefuture/stories_kenya_cooking_stove.shtml

50% less
energy cost

50% less fuel
wood
collection time

50% less
cooking time

70% less
air pollution



Integrated Response

